

**TAKEUCHI**

**TB210R**

Short tail excavator with folding canopy



The compact design and the smallest swing radius on both sides allow the **TB210R** short tail excavator to work without restrictions even in the tightest of spaces. With a width of only 750 mm and the foldable canopy, the smallest of the TAKEUCHI family fits through any door, but at the same time convinces with maximum stability thanks to the hydraulically widenable undercarriage.



- » Hydraulic circuit for breaker with 22,2 l/min for demanding work
- » Hydraulic track widening, long chassis and dozer blade for a level of stability that is unrivalled in its class
- » Swivelling consoles for more space and seating comfort for the driver
- » Lifting cylinder is designed as a neck cylinder and offers optimum protection even during demolition work



For three hours, two days  
or a whole year - if you need  
it for your construction site,  
you can **rent and buy** your  
TB210R from us.

[www.huppenkothen.com](http://www.huppenkothen.com)





# Huppenkothen added-value equipment:

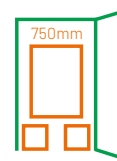
**There is additional equipment that everyone wants.**

You therefore get all as standard from Huppenkothen. This makes your excavator more effective, faster and more comfortable.

**Put simply – added value.**



Variable  
track width



Compact



Minimum slewing  
radius

## HYDRAULICS

1<sup>st</sup> hydraulic auxiliary circuit, with proportional control – max. 22,2 l / min

Mechanical switch valve – pressureless return flow for breaker operation

Hydraulic track width adjustment – for more stability

Hydraulic tank ventilation

End position damping at boom cylinder

## COMFORT EQUIPMENT

Comfort seat – weatherproof design

Swivelling consoles for more space and seating comfort for the driver

## TECHNICAL AND SAFETY EQUIPMENT

Dozer blade with extensions – depending on track width

Double air filter – additional protection for the engine

Spring-loaded accumulator on parking brake

Spring-loaded accumulator on slew brake

Pressure accumulator for pressure relief of hydraulic circuits and emergency boom lowering

Socket for rotary beacon

Optional additional  
equipment and services



### HUPPIWarranty

Extended premium warranty package with all-round protection.

### HUPPIFleetManagement

An eye on every machine at all times with fleet management. First 2 years included in purchase price.

MAIN DIMENSIONS	
Service weight* (kg)	1.210
Total width (mm)	750 / 1.020**
Overall height (mm)	2.190
Transport length - dozer blade at the rear (mm)	3.175
Digging depth (mm)	1.755
Reach (mm)	3.285
Arm length (mm)	880
Tail swing radius (mm)	610
Tracks	Rubber
Track width (mm)	180
Ground contact (mm)	1.005
Ground pressure (kg/cm <sup>2</sup> )	0,28
Ground clearance (mm)	160
Dozer blade dimensions (mm)	750 (1.020**) x 200

\* Machine weight + SWPL + medium size bucket + half a tank of diesel

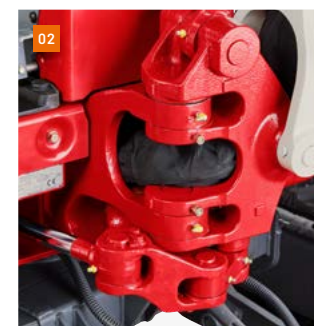
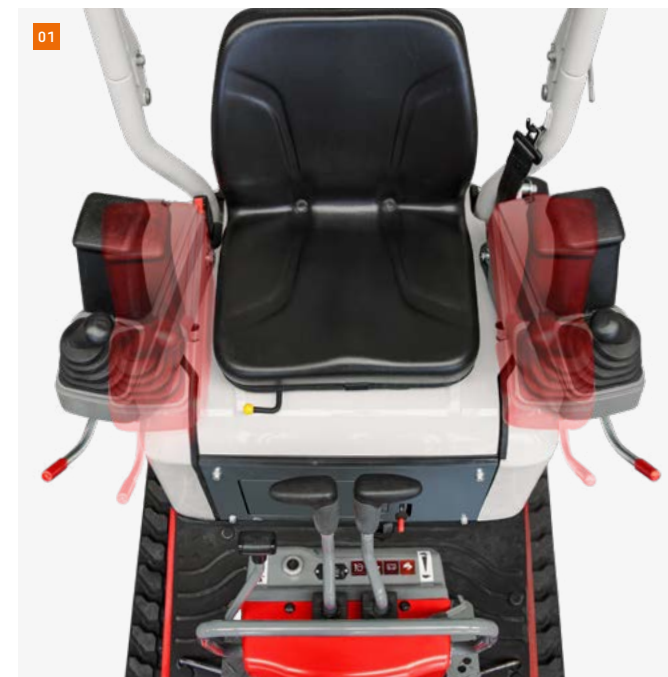
\*\* Width with hydraulically widened chassis

ENGINE	
Type	KUBOTA D722-E4B 3-cylinder diesel engine Stage V emission level
Rated output ISO14396 (kW)	8,8kW @ 2.200 rpm
Displacement (cm <sup>3</sup> )	719
Fuel tank (l)	12

WORK PERFORMANCE	
Travel speed (km/h)	2,0 (1 <sup>st</sup> gear) / 3,7 (2 <sup>nd</sup> gear)
Slew speed (rpm)	10
Gradeability (degrees/%)	15 / 27
Boom swing angle l/r (°)	85 / 85
Digging force bucket (kN)	11,2
Digging force arm (kN)	6,4

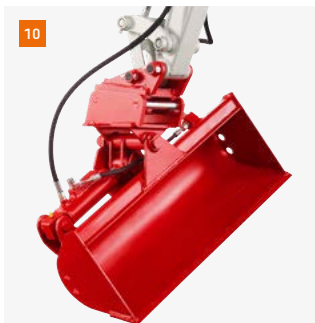
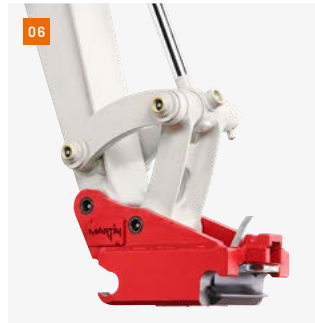
HYDRAULIC SYSTEM	
Hydraulic pumps	3 x gear pump
Pump pressure (bar)	182 x 182 x 34
Flow rate (l/min)	11,1 x 11,1 x 5,8
Hydraulic oil quantity (l)	9 (tank) / 15 (total)
Slew motor type	Axial piston motor, rigid
Travel motor type	Axial piston motor, variable

AUXILIARY CONTROL CIRCUITS	
1 <sup>st</sup> hydraulic breaker control circuit (l/min)	22,2



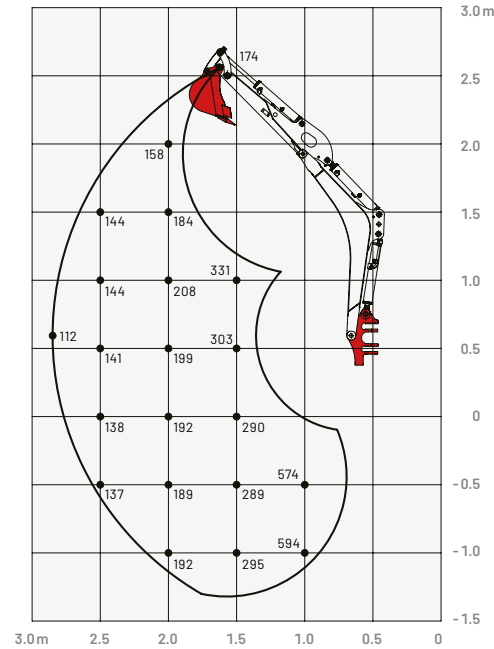
- 01 Swivelling consoles for more space and seating comfort for the driver
- 02 Robust boom swing assy with specially protected hose guide; boom cylinder with end position damping.
- 03 Generous maintenance hatch for service-friendly access to the engine and hydraulic unit
- 04 Crawler chassis with hydraulic track widening. Track rollers with external guide for safe rubber track running and low-vibration travel.
- 05 1 hydraulic auxiliary circuit, operated by mechanical foot pedal
- 06 Mechanical quick change plate HUPPPlate M; allows the backhoe bucket to be used as a high bucket
- 07 Widenable dozer blade depending on track width
- 08 Hydraulic breaker HUPPBreak 52
- 09 Large ground clearance
- 10 Tilttable trench bucket, left 45° / right 45°





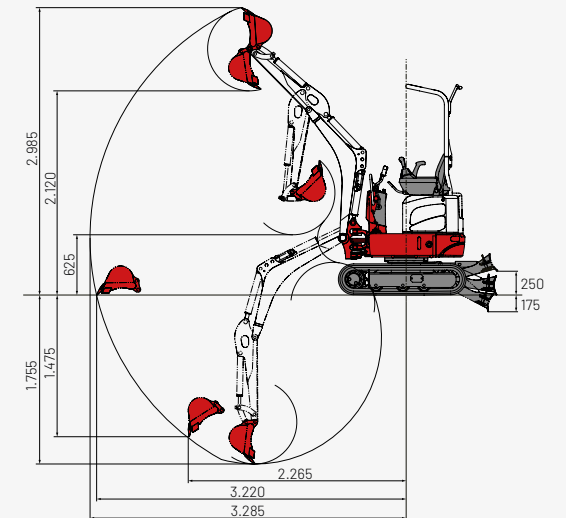
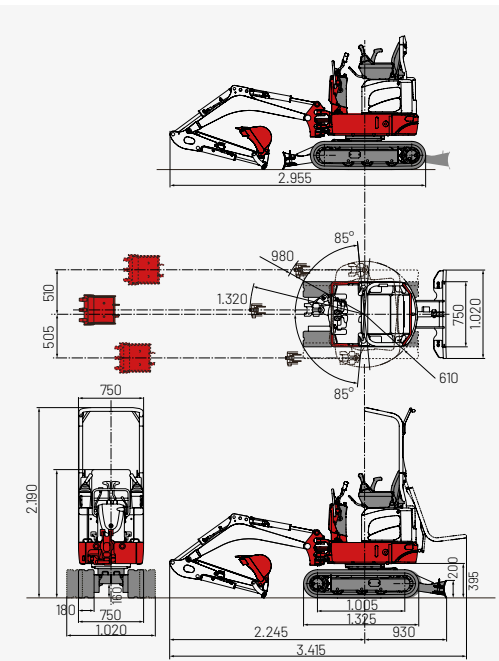
## Lifting load (kg)

Forward (upper dozer blade)



The loads in the diagram are within 87% of the hydraulic lifting load and within 75% of the tipping load.

## Dimensions (mm)



More accessories at  
[huppenkothen.com/  
 excavator-accessories](http://huppenkothen.com/excavator-accessories)

## Huppenkothen – your construction site, your partner, your success!

If you're looking to buy or rent a construction machine, if quality is important to you and you have no time to lose, then you've come to the right place with Huppenkothen. We provide all you need for your construction site. If you have any questions:

**We are always available.**

**41**

Locations

**350**

Employees

**4.500+**

Machines

**100 %**

Service

### AUSTRIA (AT)

/

#### Huppenkothen GmbH

Bundesstraße 117 / 6923 Lauterach  
T +43 50 663 400 / F +43 5574 778 24  
info@huppenkothen.com

### SWITZERLAND (CH)

/

#### Huppenkothen Baumaschinen AG

Hinterwiden / 9245 Oberbüren  
T +41 71 944 18 11 / F +41 71 944 18 69  
oberbueren@huppenkothen.com

### SOUTH-TIROL (IT)

/

#### Huppenkothen GmbH / SRL

Peter-Anich-Straße 1 / 39011 Lana (BZ)  
T +39 0473 491 170 / F +39 0473 491 171  
lana@huppenkothen.com

### SLOVENIA (SVN)

/

#### Huppenkothen d.o.o.

Slovenčeva ulica 97, 1113 Ljubljana  
T +386 15 300 333 / F +386 15 300 344  
ljubljana@huppenkothen.com

The complete  
Huppenkothen  
product range

