



**TAKEUCHI**

**TB260**

Midi excavator with cabin

The Takeuchi **TB260** midi-excavator has an extremely compact design and convinces with its low overhang and a rear swing radius of only 1300 mm even on narrow construction sites. Our 6-tonner has a hydraulic flow of over 100 l on the first control circuit - so even demanding attachments, such as mulchers or rootstock cutters, can be operated optimally.



- » 1<sup>st</sup> hydraulic circuit, with proportional control with 102,2 l/min
- » 6 LED worklights for optimum illumination of working area
- » Refuelling pump



For three hours, two days or a whole year - if you need it for your construction site, you can **buy and rent** your TB260 from us.

[www.huppenkothén.com](http://www.huppenkothén.com)



# Huppenkothen added-value equipment:

**There is additional equipment that everyone wants.**

You therefore get all as standard from Huppenkothen. This makes your excavator more effective, faster and more comfortable.

**Put simply – added value.**

## **HYDRAULICS**

**4 hydraulic auxiliary circuits**, 3 of which have proportional control

**Flow rates adjustable on the display**

1<sup>st</sup> circuit: 3 memories, 2<sup>nd</sup>/4<sup>th</sup> circuit: 1 memory

**1<sup>st</sup> hydraulic auxiliary circuit, with proportional control** – max. 102,2 l / min

**2<sup>nd</sup> hydraulic auxiliary circuit, with proportional control** – max. 43,9 l / min

**3<sup>rd</sup> hydraulic auxiliary circuit**, for hydraulic quick change plate HUPPlate H

**4<sup>th</sup> hydraulic auxiliary circuit, with proportional control** – max. 43,9 l / min

**Detent Mode** – breaker line continuous operation

**Auto-Tank** – depressurised return flow for breaker operation

**Automatic pressure relief of control circuits** when quick change plate is actuated

**Hydraulic tank ventilation**

**Pilot-opened load-holding valve on boom cylinder and arm cylinder**

**End position damping at boom, arm and swing cylinder**



Exclusive  
additional  
equipment



Powerful



Spacious and  
comfortable  
operator cabin



Adjustable  
flow rates

## **CAB WITH COMFORT EQUIPMENT**

**Comfort cabin ROPS** (ISO12117-2) / OPG (ISO10262 Level I)

**5,7" multifunction color display** incl. fuel and temperature indicator

**Heating and radio**

**Electronically controlled air conditioning** with 4 outlet nozzles

**Mechanically cushioned comfort seat with headrest**

**HFM (HUPPIFleetManagement)** – telematics system with 2 year term of use, extended for additional charge

**ECO mode** – to increase economic efficiency

**Automatic idle speed control** – optimised fuel consumption

**Sun shield and rain guard**

## **TECHNICAL AND SAFETY EQUIPMENT**

**Double air filter** – additional protection for the engine

**Spring-loaded accumulator on parking brake**

**Spring-loaded accumulator on slew brake**

**Electric refuelling pump**

**Pressure accumulator** for pressure relief of hydraulic circuits and emergency boom lowering

**Storage compartment with on-board toolkit**

**Acoustic overload warning device** (EN474-5)

**LED worklights**

2 x cab at front, 2 x cab at rear, 1 x engine hood at front, 1 x boom

**Socket on cab roof** for rotary beacon

**Optional additional  
equipment and services**

### **HUPPLub**

Huppenkothen central lubrication system to ensure everything runs even more smoothly.

/

### **HUPPTronic**

Digital assistance for excavator operators – economical, comfortable and intuitive to use.

/

### **HUPPIWarranty**

Extended premium warranty package with all-round protection.

/

### **HUPPIFleetManagement**

An eye on every machine at all times with fleet management. First 2 years included in purchase price.





MAIN DIMENSIONS	
Service weight* (kg)	6.030
Total width (mm)	2.000
Overall height (mm)	2.560
Transport length - dozer blade at the rear (mm)	6.110
Digging depth (mm)	3.735
Reach (mm)	6.120
Arm length (mm)	1.620
Tail swing radius (mm)	1.300
Tracks	Rubber
Track width (mm)	400
Ground contact (mm)	2.050
Ground pressure (kg/cm <sup>2</sup> )	0,315
Ground clearance (mm)	330
Dozer blade dimensions (mm)	2.000 x 430

\* Machine weight + PT + HUPPLate + medium size bucket + half a tank of diesel

ENGINE	
Type	Yanmar 4TNV86CT 4-cylinder diesel engine, turbocharger Stage V emission level
Exhaust aftertreatment	DPF and DOC
Rated output ISO14396 (kW)	35,5 kW @ 2.400 r.p.m.
Displacement (cm <sup>3</sup> )	2.091
Fuel tank (l)	81

WORK PERFORMANCE	
Travel speed (km/h)	2,8 (1 <sup>st</sup> gear) / 4,9 (2 <sup>nd</sup> gear)
Slew speed (rpm)	9,4
Gradeability (degrees/%)	30 / 58
Boom swing angle l/r (°)	78 / 55
Digging force bucket (kN)	43,2
Digging force arm (kN)	27,3
Digging force boom (kN)	30,4

HYDRAULIC SYSTEM	
Hydraulic pumps	2 x variable axial piston pump + 2 x gear pump
Pump pressure (bar)	240 x 240 x 206 x 33
Flow rate (l/min)	58,3 x 58,3 x 43,9 x 10,8
Hydraulic tank (l)	49 (tank) / 90 (total)
Slew motor type	Axial piston motor, rigid
Travel motor type	Axial piston motor, variable

AUXILIARY CONTROL CIRCUITS	
1 <sup>st</sup> control circuit hydraulic breaker (l / min) adjustable flow rate 3 memories for the flow rates	102,2
2 <sup>nd</sup> /4 <sup>th</sup> control circuit Powertilt / grab (l / min) adjustable flow rate 1 memory for the flow rate	43,9

**01** Robust boom swing assy with specially protected hose guide and hydraulic boom swing; boom, arm and swing cylinder with end position damping. Pictured with HUPPLub central lubrication system.

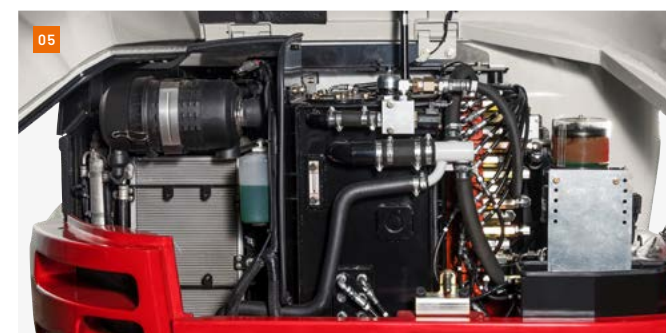
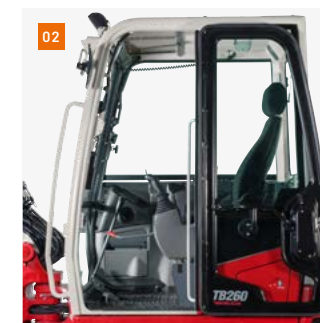
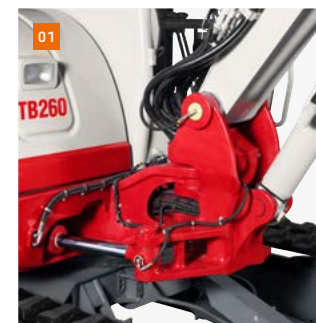
**02** Sound-damped, low-vibration comfort cab with mechanically cushioned comfort seat with headrest.

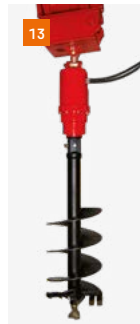
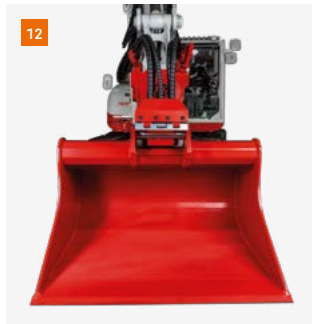
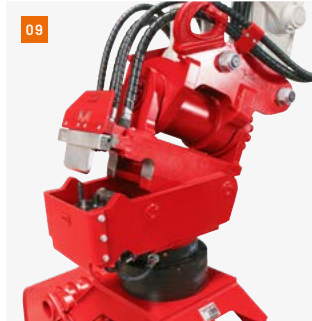
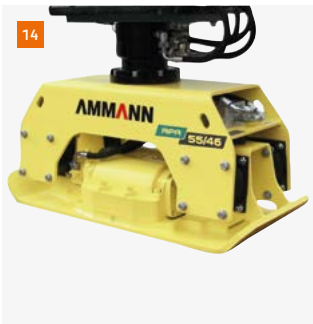
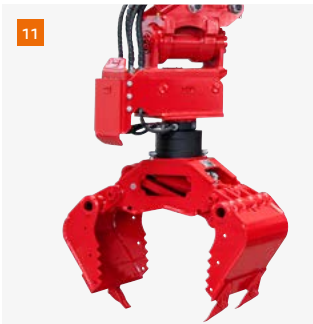
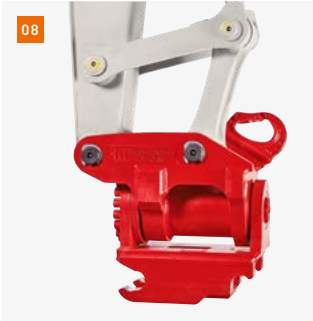
**03** Optimally arranged controls and a clear display with visual and acoustic monitoring units. ECO mode to increase economy and reduce diesel consumption.

**05** Generous maintenance hatches for optimum accessibility to hydraulic and fuel maintenance components, battery, radiator cleaning and the lubricant reservoir of the optional central lubrication system.

**06** Lockable refuelling flap

**07** Electric refuelling pump - stops automatically when the tank is full.





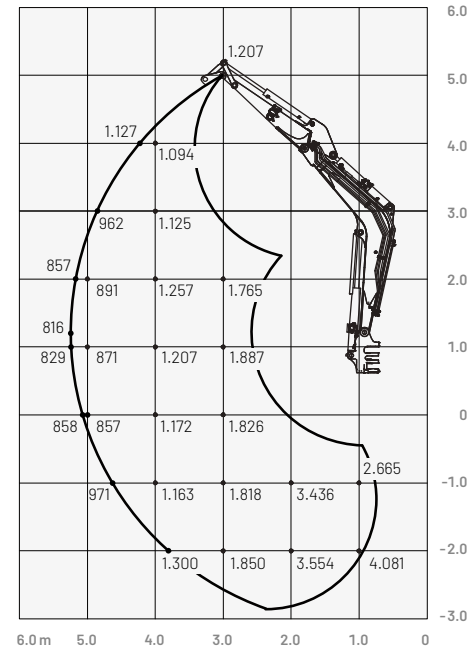
- 08 HUPPTilt tilt device with hydraulic quick change plate HUPPPlate H
- 09 HUPPQuick quick coupling system: Hydraulic connections are connected automatically during the quick coupling process.
- 10 HUPPBear hydraulic breaker 302 with HUPPQuick
- 11 HUPPGrip universal grabber UG05 II with HUPPTilt
- 12 HUPPTilt with HUPPPlate H, digging bucket can be mounted as high bucket
- 13 Earth drill - 4500 MAX
- 14 Add-on compactor - Ammann APA55/46
- 15 Wood grapple - Lasco LA1400HZ



More accessories at  
[huppenkothen.com/  
 excavator-accessories](http://huppenkothen.com/excavator-accessories)

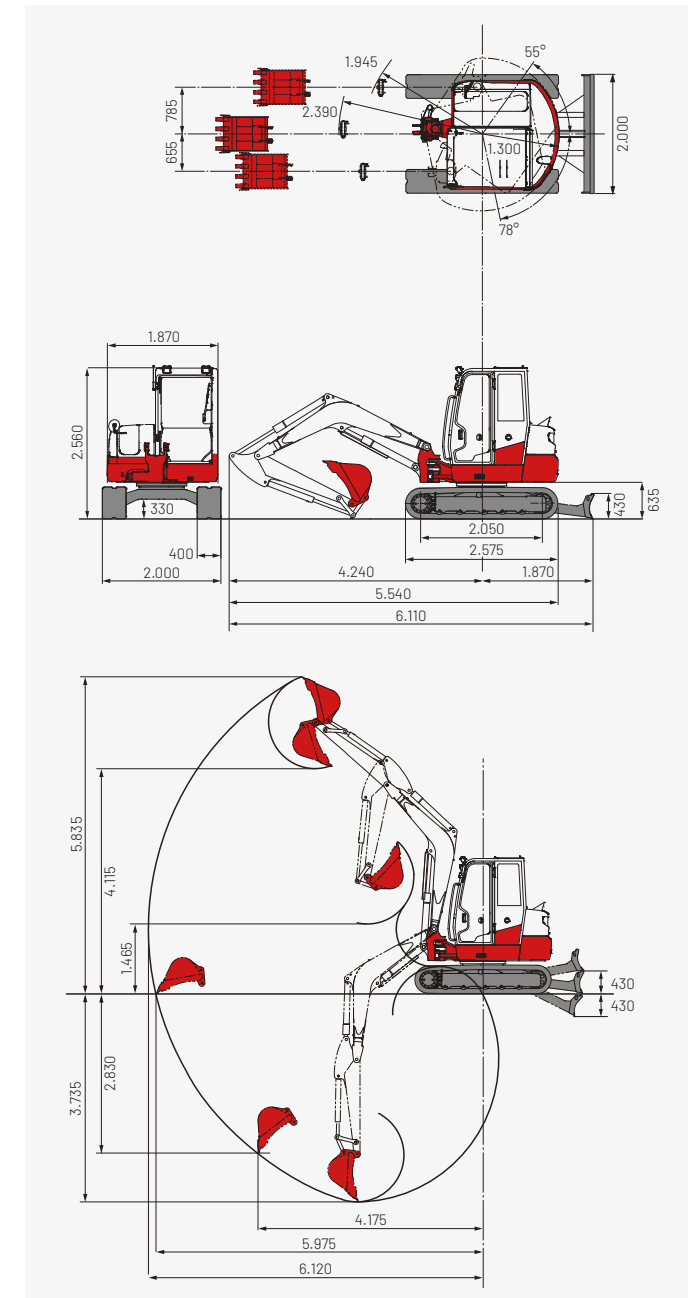
## Lifting load (kg)

Forward (upper dozer blade)



The loads in the diagram are within 87% of the hydraulic lifting load and within 75% of the tipping load.

## Dimensions (mm)



## Huppenkothen – your construction site, your partner, your success!

If you're looking to buy or rent a construction machine, if quality is important to you and you have no time to lose, then you've come to the right place with Huppenkothen. We provide all you need for your construction site. If you have any questions:

**We are always available.**

**41**

Locations

**350**

Employees

**4.500+**

Machines

**100 %**

Service

### AUSTRIA (AT)

/

#### Huppenkothen GmbH

Bundesstraße 117 / 6923 Lauterach  
T +43 50 663 400 / F +43 5574 778 24  
info@huppenkothen.com

### SLOVENIA (SVN)

/

#### Huppenkothen d.o.o.

Slovenčeva ulica 97, 1000 Ljubljana  
T +386 15 300 333 / F +386 15 300 344  
ljubljana@huppenkothen.com

### CROATIA (HR)

/

#### Huppenkothen d.o.o.

Velimira Škorpika 16, 10000 Zagreb  
T +385 15 (1) 77 800  
zagreb@huppenkothen.hr

The complete  
Huppenkothen  
product range

