

TAKEUCHI

TB280FR

Zero tail midi-excavator



The Takeuchi midi excavator **TB280FR** is specifically designed for unrestricted working on very confined construction sites.

The patented side-to-side (STS) offset boom makes this zero tail excavator more compact than a short tail excavator. Our 9-tonner manages a 360° turn with an envelope circle of only 3.220 mm. To dig at the front and load a dumper at the rear, even 2.890 mm are enough and so the TB280FR can work perfectly even in a narrow alley.



- » 1st hydraulic circuit, with proportional control with 148 l/min High Flow
- » Electric refuelling pump
- » 5 LED worklights for optimum illumination of working area
- » Tilt-up cab for service-friendly access to engine and hydraulic components



For three hours, two days or a whole year - if you need it for your construction site, you can **buy and rent** your TB280FR from us.

www.huppenkothen.com



Huppenkothen added-value equipment:

There is additional equipment that everyone wants.

You therefore get all as standard from Huppenkothen. This makes your excavator more effective, faster and more comfortable.

Put simply – added value.

HYDRAULICS

4 hydraulic auxiliary circuits, 3 of which have proportional control

Flow rates adjustable on the display

1st circuit: 3 memories, 2nd/4th circuit: 1 memory

1st hydraulic auxiliary circuit, with proportional control – max. 148 l/min

2nd hydraulic auxiliary circuit, with proportional control – max. 59 l/min

3rd hydraulic auxiliary circuit, for hydraulic quick change plate HUPPlate H

4th hydraulic auxiliary circuit, with proportional control – max. 59 l/min

Detent Mode – breaker line continuous operation

Auto-Tank – depressurised return flow for breaker operation

Automatic pressure relief of control circuits when quick change plate is actuated

Hydraulic tank ventilation

Pilot-opened load-holding valve on boom cylinder and arm cylinder

End position damping at boom, arm and boom-offset cylinder



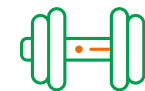
**Exclusive additional
equipment**



**Minimal envelope circle
3.220 mm**



Efficient



**Adjustable
powerhouse**

CAB WITH COMFORT EQUIPMENT

Comfort cabin including roof guard ROPS (ISO12117-2) / OPG (ISO10262 Level I) / TOP GUARD (ISO10262 Level II)

5,7" multifunction color display

Electronically controlled air conditioning with 4 outlet nozzles

Heating and radio

Air suspension comfort seat

HFM (HUPPIFleetManagement) – telematics system with 2 year term of use, extended for additional charge

ECO mode – to increase economic efficiency

Automatic idle speed control – optimised fuel consumption

Sun shield and rain guard

TECHNICAL AND SAFETY EQUIPMENT

Double air filter – additional protection for the engine

Automatic hydraulic track tensioning

Spring-loaded accumulator on parking brake

Spring-loaded accumulator on slew brake

Electric refuelling pump

Pressure accumulator for pressure relief of hydraulic circuits and emergency boom lowering

Storage compartment with on-board toolkit

Acoustic overload warning device (EN474-5)

LED worklights

2 x cab at front, 2 x cab at rear, 1 x boom

Socket on cab roof for rotary beacon

**Optional additional
equipment and services**

HUPPLub

Huppenkothen central lubrication system to ensure everything runs even more smoothly.

/

HUPPTronic

Digital assistance for excavator operators – economical, comfortable and intuitive to use.

/

HUPPIWarranty

Extended premium warranty package with all-round protection.

/

HUPPIFleetManagement

An eye on every machine at all times with fleet management. First 2 years included in purchase price.



MAIN DIMENSIONS	
Service weight* (kg)	8.950
Total width (mm)	2.300
Overall height (mm)	2.725
Transport length - dozer blade at the rear (mm)	6.860
Digging depth (mm)	4.375
Reach (mm)	7.035
Arm length (mm)	1.830
Tail swing radius (mm)	1.280
Tracks	Rubber
Track width (mm)	450
Ground contact (mm)	2.210
Ground pressure (kg/cm ²)	0,38
Ground clearance (mm)	315
Dozer blade dimensions (mm)	2.300 x 500

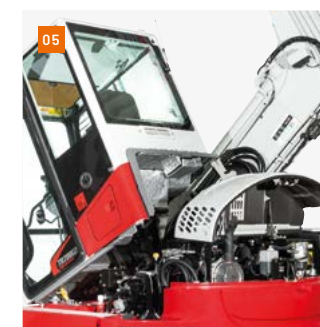
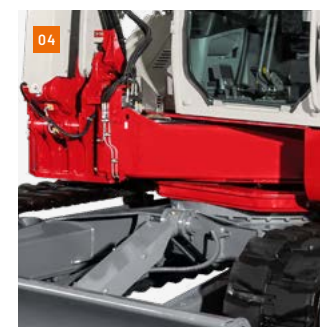
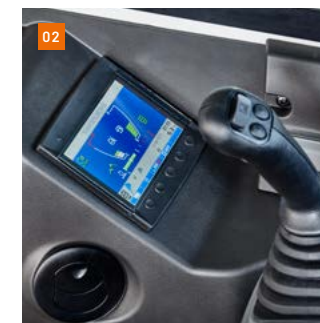
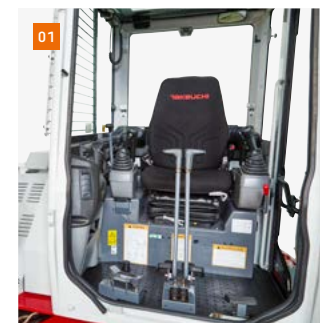
* Machine weight + PT + HUPPLate + medium size bucket + half a tank of diesel

ENGINE	
Type	YANMAR 4TNV98CT 4-cylinder Commonrail diesel engine, turbocharger, Stage V emission level
Exhaust aftertreatment	DPF and DOC
Rated output ISO14396 (kW)	51,6 kW @ 2.000 r.p.m.
Displacement (cm ³)	3.318
Fuel tank (l)	100

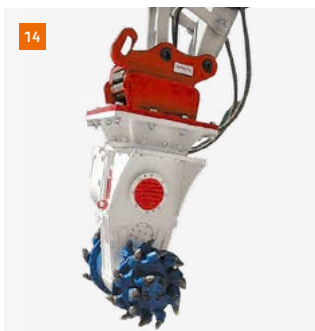
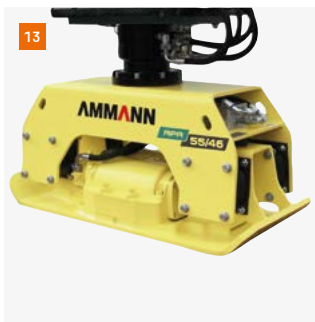
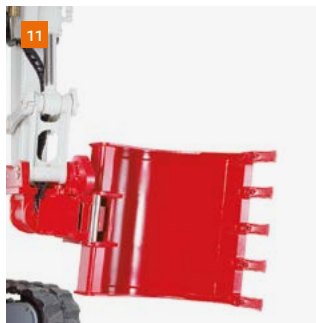
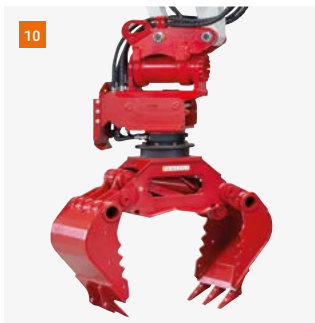
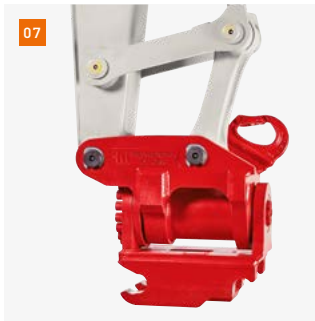
WORK PERFORMANCE	
Travel speed (km/h)	2,7 (1 st gear) / 5,2 (2 nd gear)
Slew speed (rpm)	10
Gradeability (degrees/%)	30 / 58
Boom swing angle l/r (°)	30 / 15
Digging force bucket (kN)	46,7
Digging force arm (kN)	32,9
Digging force boom (kN)	23,3

HYDRAULIC SYSTEM	
Hydraulic pumps	Double axial piston pump + 2 gear pumps
Pump pressure (bar)	275 x 275 x 240 x 35
Flow rate (l/min)	74 x 74 x 59 x 15
Hydraulic tank (l)	71 (tank) / 147 (total)
Slew motor type	Axial piston motor, rigid
Travel motor type	Axial piston motor, variable


AUXILIARY CONTROL CIRCUITS	
1 st control circuit hydraulic breaker (l / min)	148
3 memories for the flow rates	
2 nd /4 th control circuit Powertilt / grab (l / min)	59
1 memory for the flow rate	



- 01 Sound-damped, low-vibration comfort cab with suspension comfort seat.
- 02 Large, clear and user-friendly display with visual and acoustic monitoring units.
- 03 Optimally arranged controls.
- 04 TAKEUCHI-patented, extremely robust lateral boom offset. Pictured with HUPPLub central lubrication system.
- 05 Tilt-up cab for service-friendly access to engine and hydraulic components.
- 06 Spacious engine compartment, providing convenient access for daily checks and routine maintenance points. Massive counterweight.

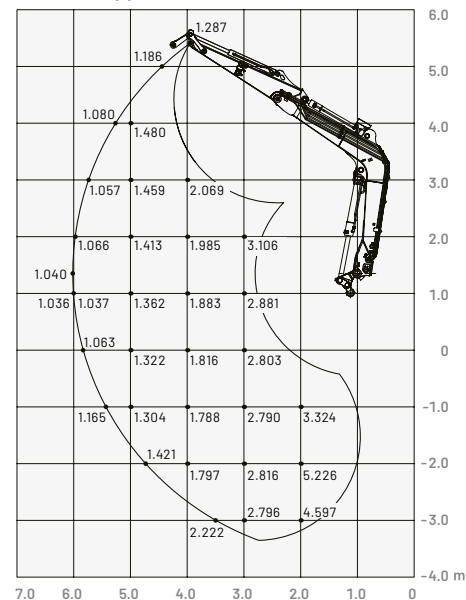


- 07** HUPPTilt tilt device with hydraulic quick change plate HUPPPlate H
- 08** HUPPQuick quick coupling system: Hydraulic connections are connected automatically during the quick coupling process
- 09** HUPPBREAK hydraulic breaker 402 with HUPPQuick
- 10** HUPPGrip universal grabber UG08 II with HUPPTilt and HUPPQuick quick coupling system
- 11** HUPPTilt with HUPPPlate H, digging bucket mounted as high bucket
- 12** Concrete buster - Epiroc CB750
- 13** Add-on compactor - Ammann APA55/46
- 14** Drum Cutter - Epiroc ER250

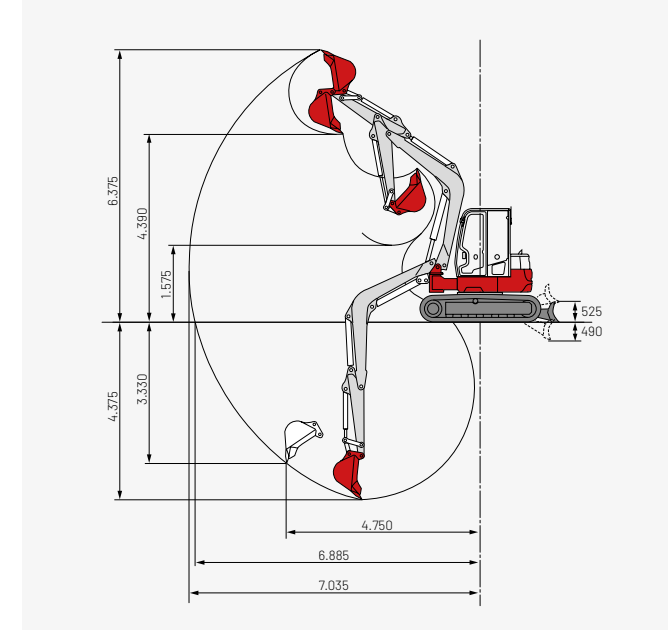
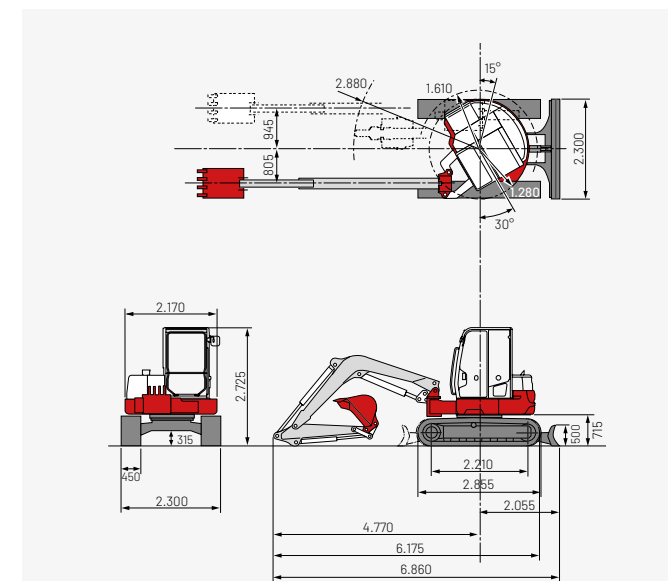

 More accessories at
[huppenkothen.com/
excavator-accessories](https://huppenkothen.com/excavator-accessories)

Lifting load (kg)

Forward, upper dozer blade



Dimensions (mm)



The loads in the diagrams (on the left) are within 87% of the hydraulic lifting load and within 75% of the tipping load.

Huppenkothen – your construction site, your partner, your success!

If you're looking to buy or rent a construction machine, if quality is important to you and you have no time to lose, then you've come to the right place with Huppenkothen. We provide all you need for your construction site. If you have any questions:

We are always available.

41

Locations

350

Employees

4.500+

Machines

100 %

Service

AUSTRIA (AT)

/

Huppenkothen GmbH

Bundesstraße 117 / 6923 Lauterach
T +43 50 663 400 / F +43 5574 778 24
info@huppenkothen.com

SLOVENIA (SVN)

/

Huppenkothen d.o.o.

Slovenčeva ulica 97, 1000 Ljubljana
T +386 15 300 333 / F +386 15 300 344
ljubljana@huppenkothen.com

CROATIA (HR)

/

Huppenkothen d.o.o.

Velimira Škorpika 16, 10000 Zagreb
T +385 15 (1) 77 800
zagreb@huppenkothen.hr

The complete
Huppenkothen
product range

