

TAKEUCHI

TB295W V

TB295W V-P

Mobile excavator with 2-pc-boom
with or without outriggers



The Takeuchi **TB295W V** with a 2-piece-boom is a highly versatile wheeled excavator. It does not require costly and time-consuming transport to and from the construction site. This makes it ideal for house connections, as it can travel independently from one site to the next. The advantages of the new Bandenmarkt-tyres are obvious: smoother running, better stability and less soil in the tread.



- » 1st hydraulic circuit, with proportional control with 120 l/min High Flow
- » Adjustable pressure and flow rate in the auxiliary hydraulics
- » 2-pc-boom with 2 adjustment cylinders - for a larger working range
- » 4 LED worklights for optimum illumination of working area
- » Available in 2 versions: TB295W V with 2-pc-boom and TB295W V-P with 2-pc-boom and outriggers



For three hours, two days or a whole year - if you need it for your construction site, you can **buy and rent** your TB295W V(-P) from us.

www.huppenkothen.com



Huppenkothen added-value equipment:

There is additional equipment that everyone wants.

You therefore get all as standard from Huppenkothen. This makes your excavator more effective, faster and more comfortable.

Put simply – added value.

HYDRAULICS

4 hydraulic auxiliary circuits, 3 of which have proportional control

Flow rates and pressure adjustable on the display

1st circuit: 3 memories, 2nd/4th circuit: 1 memory

1st hydraulic auxiliary circuit, with proportional control – max. 120 l / min High Flow

2nd hydraulic auxiliary circuit, with proportional control – max. 55 l / min

3rd hydraulic auxiliary circuit, for hydraulic quick change plate HUPPlate H

4th hydraulic auxiliary circuit, with proportional control – max. 55 l / min

Detent Mode – breaker line continuous operation

Auto-Tank – depressurised return flow for breaker operation

Automatic pressure relief of control circuits when quick change plate is actuated

Power-controlled load-sensing pump – for more efficiency

Hydraulic tank ventilation

Pilot-opened load-holding valve on boom, arm and 2-piece-boom cylinder

End position damping at boom, arm and swing cylinder



Exclusive additional
equipment



Powerful



Large working range



Adjustable
hydraulic pressure

CAB WITH COMFORT EQUIPMENT

Comfort cabin including roof guard ROPS (ISO12117-2) / OPG (ISO10262 Level I)

7" multifunction color display

Electronically controlled air conditioning with 4 outlet nozzles

Heating and radio

Air suspension comfort seat with seat heating

HFM (HUPPIFleetManagement) – telematics system with 2 year term of use, extended for additional charge

ECO mode – to increase economic efficiency

Automatic idle speed control – optimised fuel consumption

Sun shield

Rain guard

TECHNICAL AND SAFETY EQUIPMENT

Double air filter – additional protection for the engine

2-pc-boom with 2 cylinders

Spring-loaded accumulator on parking brake

Spring-loaded accumulator on slew brake

Electric refuelling pump

Pressure accumulator for pressure relief of hydraulic circuits and emergency boom lowering

Storage compartment with on-board toolkit

Acoustic overload warning device (EN474-5)

Auto-Cruise – cruise control

Rear view camera – for more safety

LED worklights

1 x cab at front, 1 x cab at rear, 1 x engine hood at front, 1 x boom

Road lighting

Socket on cab roof for rotary beacon

Outriggers – removable, interchangeable with dozer blade (only TB295W V-P)

Optional additional
equipment and services

HUPPLub

Huppenkothen central lubrication system to ensure everything runs even more smoothly.

/

HUPPView

Bucket position control system for precise work.

/

HUPPLevel

Automated levelling and planing.

/

HUPPIWarranty

Extended premium warranty package with all-round protection.

/

HUPPIFleetManagement

An eye on every machine at all times with fleet management. First 2 years included in purchase price.



MAIN DIMENSIONS	
Service weight* (kg)	10.680 / 10.990 (with outriggers)
Total width (mm)	2.335 / 2.390**
Overall height (mm)	3.010
Transport length - dozer blade at the rear (mm)	6.565
Digging depth (mm)	4.115
Reach (mm)	7.775
Arm length (mm)	2.130
Tail swing radius (mm)	1.690
Tyres	8x 8,25-20-14PR / 275/70R22.5**
Wheelbase (mm)	2.200
Ground clearance (mm)	320
Dozer blade dimensions (mm)	2.300 x 500

* Machine weight + PT + HUPPPlate + medium size bucket + half a tank of diesel

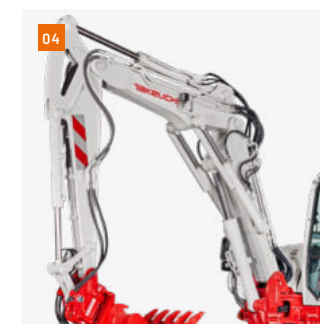
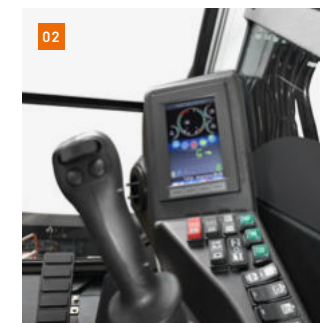
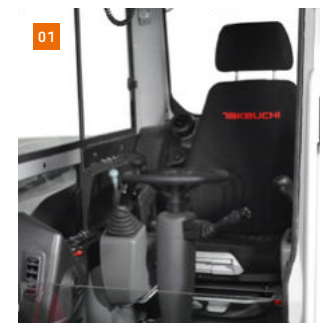
** with Bandenmarkt "Excavator" tyres

ENGINE	
Type	Deutz TCD3.6L4 4-cylinder Commonrail diesel engine, turbocharger, Stage V emission level
Exhaust aftertreatment	DPF, SCR and DOC
Rated output ISO14396 (kW)	85 kW @ 2.200 r.p.m.
Displacement (cm ³)	3.621
Fuel tank (l)	162
AdBluetank (l)	10

WORK PERFORMANCE	
Travel speed (km/h)	29,7
Slew speed (rpm)	10,1
Gradeability (degrees/%)	35 / 70
Boom swing angle l/r (°)	70 / 60
Digging force bucket (kN)	58,9
Digging force arm (kN)	39,7
Digging force boom (kN)	47,1

HYDRAULIC SYSTEM	
Hydraulic pumps	2 x variable axial piston pump + 5 x gear pump
Pump pressure (bar)	275 x 35 x 240 x 200 x 140 x 380 x 24
Flow rate (l/min)	176 x 15,4 x 59,6 x 40,3 x 35,6 x 156 x 43,1
Hydraulic tank (l)	95 (tank) / 200 (total)
Slew motor type	Axial piston motor, rigid
Travel motor type	Axial piston motor, variable

AUXILIARY CONTROL CIRCUITS	
1 st control circuit hydraulic breaker (l / min)	120
3 memories for flow rate	
1 memory for pressure	
2 nd /4 th control circuit Power tilt / grab (l / min)	55
1 memory for flow rate and pressure	



01 Sound-damped, low-vibration comfort cab with air suspension comfort seat with seat heating. Ergonomic joysticks that swing with the driver's seat. Innovative steering column adjustment.

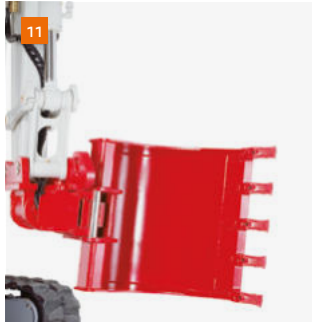
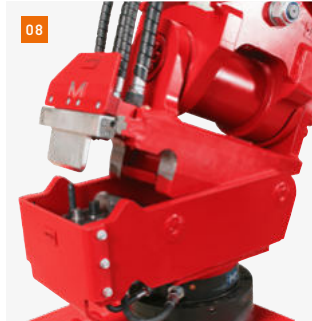
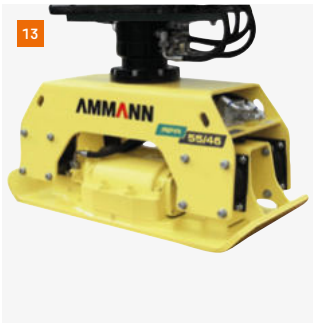
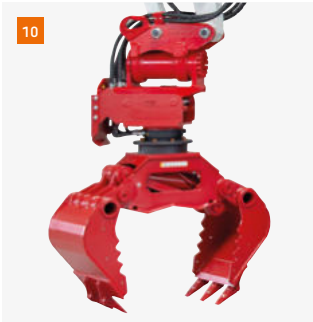
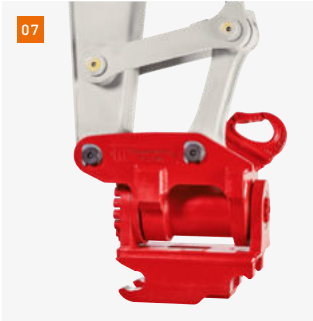
02 Optimally arranged controls with large, clear and user-friendly display. The rear view camera is displayed automatically.

03 Rear view camera - for more safety

04 2-pc-boom with 2 cylinders

05 Generous maintenance hatches for optimum accessibility to hydraulic and fuel maintenance components, battery and radiator.

06 TB295W V-P: with outriggers for maximum stability; the outriggers are removable and can be replaced by an additional dozer blade.



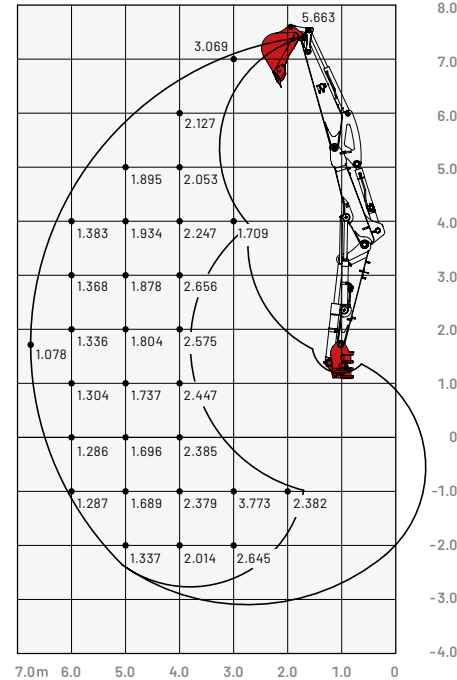
- 07** HUPPTilt tilt device with hydraulic quick change plate HUPPlate H
- 08** HUPQuick quick coupling system: Hydraulic connections are connected automatically during the quick coupling process
- 09** HUPPBear hydraulic breaker 402 with HUPQuick
- 10** HUPPGrip universal grabber UG08 II with HUPPTilt and HUPQuick quick coupling system
- 11** HUPPTilt with HUPPlate H, digging bucket mounted as high bucket
- 12** Concrete buster - Epiroc CB750
- 13** Add-on compactor - Ammann APA55/46
- 14** Drum Cutter - Epiroc ER250



More accessories at
[huppenkothen.com/
 excavator-accessories](http://huppenkothen.com/excavator-accessories)

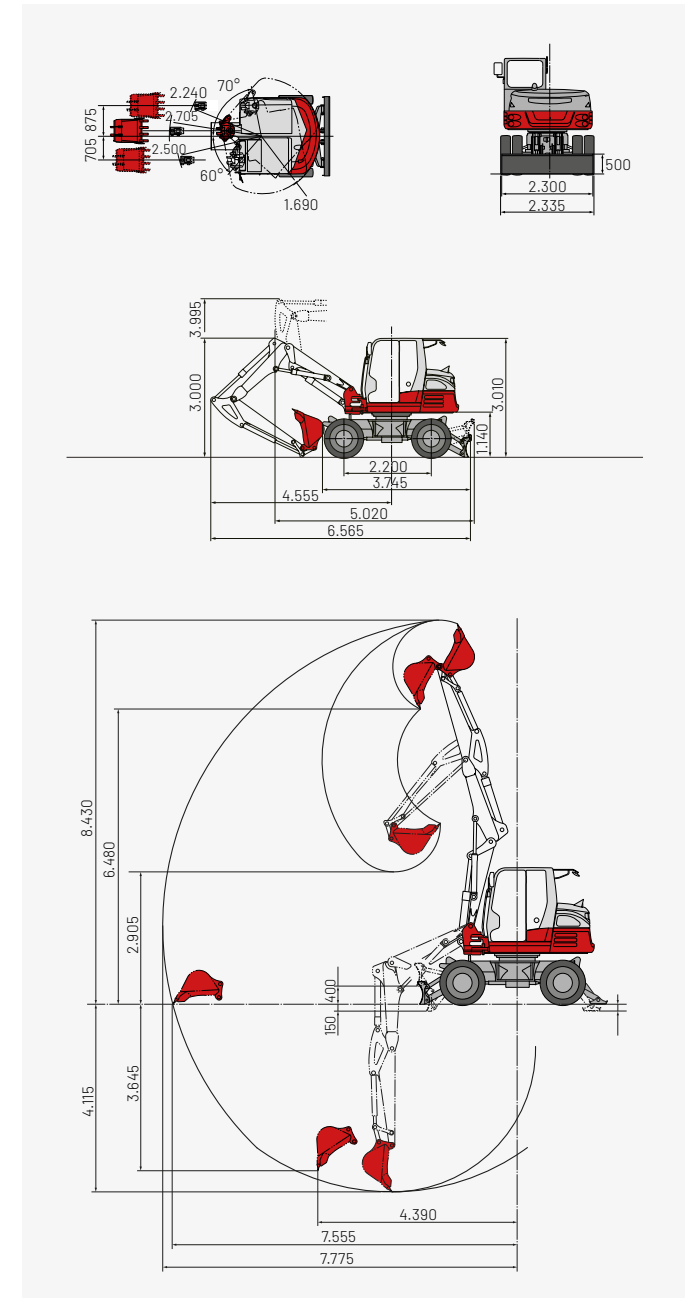
Lifting load (kg)

2-piece-boom (forward, upper dozer blade)



The loads in the diagrams (on the left) are within 87% of the hydraulic lifting load and within 75% of the tipping load.

Dimensions (mm)



Huppenkothen – your construction site, your partner, your success!

If you're looking to buy or rent a construction machine, if quality is important to you and you have no time to lose, then you've come to the right place with Huppenkothen. We provide all you need for your construction site. If you have any questions:

We are always available.

41

Locations

350

Employees

4.500+

Machines

100 %

Service

AUSTRIA (AT)

/

Huppenkothen GmbH

Bundesstraße 117 / 6923 Lauterach
T +43 50 663 400 / F +43 5574 778 24
info@huppenkothen.com

SWITZERLAND (CH)

/

Huppenkothen Baumaschinen AG

Hinterwiden / 9245 Oberbüren
T +41 71 944 18 11 / F +41 71 944 18 69
oberbueren@huppenkothen.com

SOUTH-TIROL (IT)

/

Huppenkothen GmbH / SRL

Peter-Anich-Straße 1 / 39011 Lana (BZ)
T +39 0473 491 170 / F +39 0473 491 171
lana@huppenkothen.com

SLOVENIA (SVN)

/

Huppenkothen d.o.o.

Slovenčeva ulica 97, 1113 Ljubljana
T +386 15 300 333 / F +386 15 300 344
ljubljana@huppenkothen.com

The complete
Huppenkothen
product range

