

TAKEUCHI

TB325R

Short-tail excavator with cabin /canopy



The **TB325R** with its minimal rear swing radius is the ideal mini excavator for renovation work or conversions in confined spaces. This short-tail excavator is your perfect partner, especially in urban areas, as it unfolds its potential even on narrow construction sites.



- » 1st hydraulic circuit, with proportional control with 40,0 l/min
- » Available in 2 versions: with closed cabin or with canopy
- » 3 LED worklights for optimum illumination of working area



For three hours, two days or a whole year - if you need it for your construction site, you can **buy and rent** your TB325R from us.

www.huppenkothén.com



Huppenkothen added-value equipment:

There is additional equipment that everyone wants.

You therefore get all as standard from Huppenkothen.
This makes your excavator more effective, faster and more comfortable.

Put simply – added value.

HYDRAULICS

4 hydraulic auxiliary circuits, 3 of which have proportional control

Flow rates adjustable on the display

1st circuit: 3 memories, 2nd/4th circuit: 1 memory

1st hydraulic auxiliary circuit, with proportional control – max. 40 l / min

2nd hydraulic auxiliary circuit, with proportional control – max. 14,7 l / min

3rd hydraulic auxiliary circuit, for hydraulic quick change plate HUPPlate H

4th hydraulic auxiliary circuit, with proportional control – max. 14,7 l / min

Detent Mode – breaker line continuous operation

Auto-Tank – depressurised return flow for breaker operation

Hydraulik tank ventilation

Pilot-opened load-holding valve on boom cylinder and arm cylinder



Exclusive additional
equipment



Powerful



Minimum slewing
radius



Adjustable
flow rates

CAB WITH COMFORT EQUIPMENT

Comfort cab ROPS / FOPS with radio (only cabin version)

3.5" LCD display – incl. tank and temperature indicator

Heating (only cabin version)

Mechanically cushioned comfort seat

HFM (HUPPIFleetManagement) – telematics system with 2 year term of use
– extended for additional charge

Automatic idle – r.p.m. deceleration

TECHNICAL AND SAFETY EQUIPMENT

Double air filter – additional protection for the engine

Spring-loaded accumulator on parking brake

Spring-loaded accumulator on slew brake

Pressure accumulator for pressure relief of hydraulic circuits and
emergency boom lowering

Central roof loading hook

Storage compartment with on-board toolkit

Acoustic overload warning device (EN474-5)

LED worklights

cabin: 2 x cab at front, 1 x arm

canopy: 2 x canopy at front, 1 x arm

Socket on cab roof for rotary beacon

**Optional additional
equipment and services**

HUPPLub

Huppenkothen central lubrication
system to ensure everything runs
even more smoothly.

/

HUPPTronic

Digital assistance for excavator
operators – economical,
comfortable and intuitive to use.

/

HUPPIWarranty

Extended premium warranty
package with all-round protection.

/

HUPPIFleetManagement

An eye on every machine at all
times with fleet management.
First 2 years included in purchase
price.



TECHNICAL DATA	
Engine	YANMAR 3TNV82A 3-cylinder diesel engine 16,5 kW @ 2.200 rpm (ISO14396) Stage V emission level
Dimensions (mm)	4.435 x 1.500 x 2.420 (Canopy) 4.435 x 1.500 x 2.490 (Cabin)
Digging depth (mm)	2.540
Reach (mm)	4.475
Arm length (mm)	1.210
Swing radius (mm)	1.625
Tail swing radius (mm)	825

MAIN DIMENSIONS

Service weight* (kg)	Canopy: 2.440 / Cabin: 2.580
Total width (mm)	1.500
Overall height (mm)	Canopy: 2.420 / Cabin: 2.490
Transport length - dozer blade at the rear (mm)	4.435
Boom swing angle l/r (°)	70/55

* Machine weight + PT + quick change plate + medium size bucket + half a tank of diesel

CHASSIS

Tracks	Rubber
Track width (mm)	250
Ground contact (mm)	1.510
Ground pressure (kg/cm ²)	Canopy: 0,283 / Cabin: 0,297
Ground clearance (mm)	275
Dozer blade dimensions (mm)	1.500 x 300

WORK PERFORMANCE

Travel speed (km/h)	2,5 (1 st gear) / 4,3 (2 nd gear)
Slew speed (rpm)	8,9
Gradeability (degrees/%)	25 / 47
Digging force bucket (kN)	19,3
Digging force arm (kN)	11,3

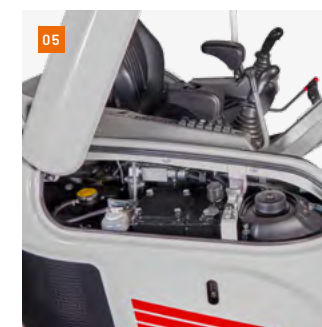
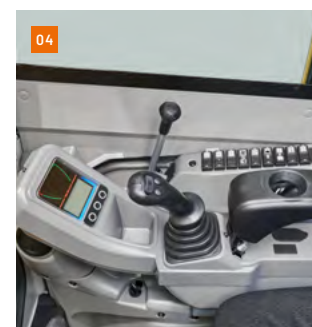
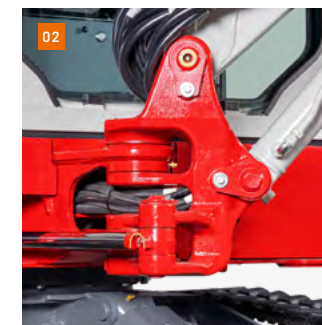
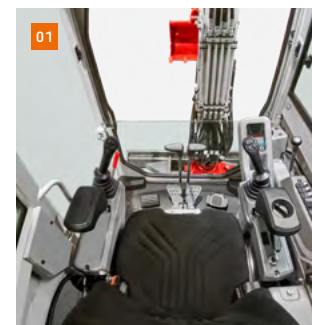
HYDRAULIC SYSTEM

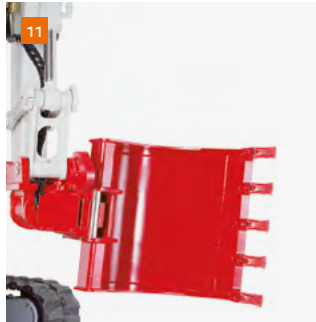
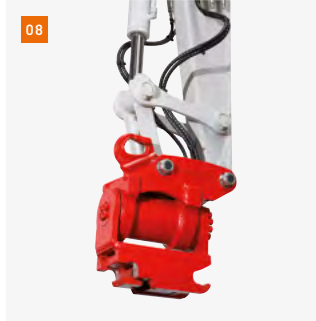
Hydraulic pumps	Double axial piston pump + 2 gear pumps
Pump pressure (bar)	210 x 210 x 196 x 34
Flow rate (l/min)	25,3 x 25,3 x 14,7 x 9,9
Hydraulic tank (l)	25 (Tank) / 48 (total)
Slew motor type	Axial piston motor, rigid
Travel motor type	Axial piston motor, variable

AUXILIARY CONTROL CIRCUITS

1 st hydraulic breaker control circuit (l/min) 3 x adjustable flow rate	40
2 nd /4 th Powertilt/grab control circuit (l/min) adjustable flow rate	14,7

- 01 Sound-damped, low-vibration comfort cab with mechanically suspended, ergonomic comfort seat for fatigue-free working.
- 02 Robust boom swing assy with specially protected hose guide; lifting and swing cylinder with end position damping.
- 03 Generous maintenance hatch guarantees optimum accessibility for checking fluid levels, cleaning the radiator and carrying out maintenance work on the diesel engine.
- 04 Optimally positioned controls with new, scratch-resistant display made of tarnish-resistant laminated glass.
- 05 Additional opening flap for optimum access to the diesel tank, hydraulic tank and coolant reservoir.
- 06 4 control circuits as standard, 3 of which have proportional control, for a wide range of implements; load-holding valves on boom and arm cylinders.





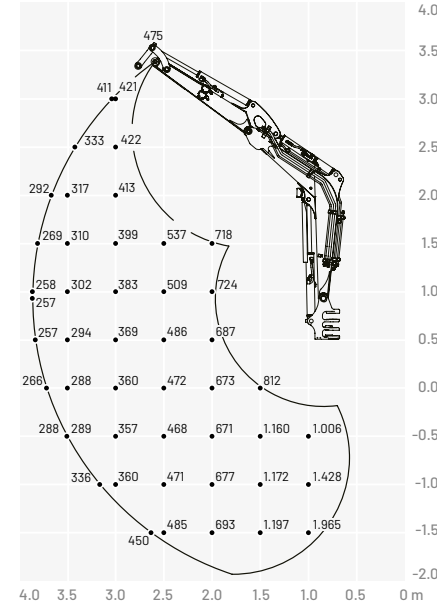
- 07 Hydraulic HUPPPlate H quick change plate
- 08 HUPPTilt tilt device with HUPPPlate H
- 09 HUPPBreak 102 hydraulic breaker
- 10 HUPPGrip universal grabber with HUPPTilt tilt device
- 11 HUPPTilt with HUPPPlate H, digging bucket mounted as high bucket



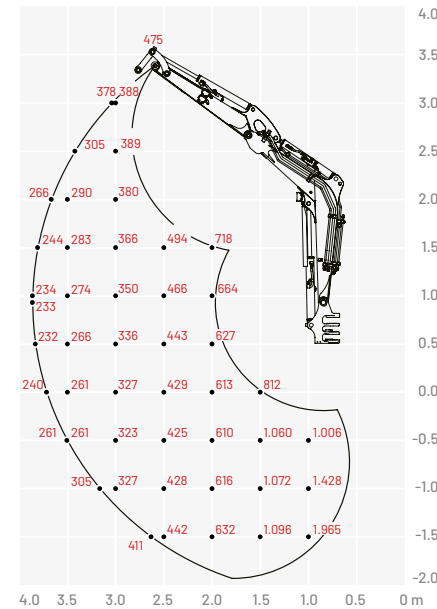
More accessories at
[huppenkothen.com/
 excavator-accessories](http://huppenkothen.com/excavator-accessories)

Lifting load (kg)

Cabin (forward, upper dozer blade)



Canopy (forward, upper dozer blade)

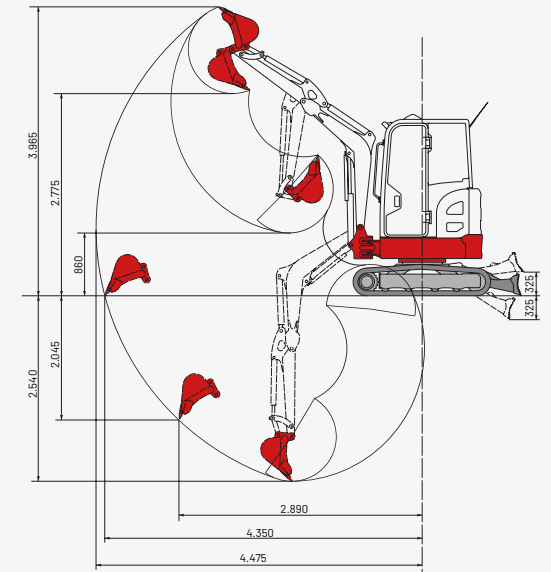
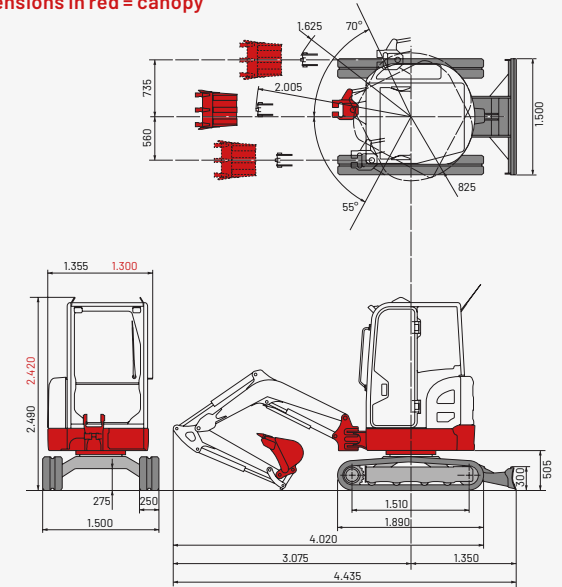


The loads in the diagram are within 87% of the hydraulic lifting load and within 75% of the tipping load.

Dimensions (mm)

Dimensions in black = cabin

Dimensions in red = canopy



Huppenkothen – your construction site, your partner, your success!

If you're looking to buy or rent a construction machine, if quality is important to you and you have no time to lose, then you've come to the right place with Huppenkothen. We provide all you need for your construction site. If you have any questions:

We are always available.

41

Locations

350

Employees

4.500+

Machines

100 %

Service

AUSTRIA (AT)

/

Huppenkothen GmbH

Bundesstraße 117 / 6923 Lauterach

T +43 50 663 400 / F +43 5574 778 24

info@huppenkothen.com

The complete
Huppenkothen
product range

