

# Quick Coupling systems

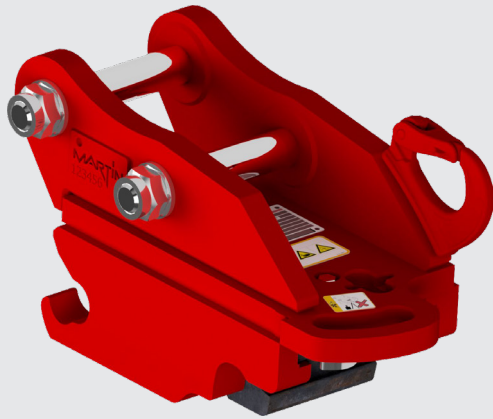
Excavator attachment



- » MARTIN Quick Coupling system - developed for fast and simple attachment changes
- » The mechanical quick coupler has an optimised opening and closing path with visual lock control
- » High-quality load hooks for high working loads and long service life
- » Bucket changed in a matter of seconds
- » Warranty: Three years or 5,000 operating hours (applies to the MARTIN Quick Coupling "Dedicated System") instead of the statutory two-year period
- » Simple and robust design in top quality, all wear parts made of wear-resistant steel

**MARTIN**  
[www.martin.at](http://www.martin.at)

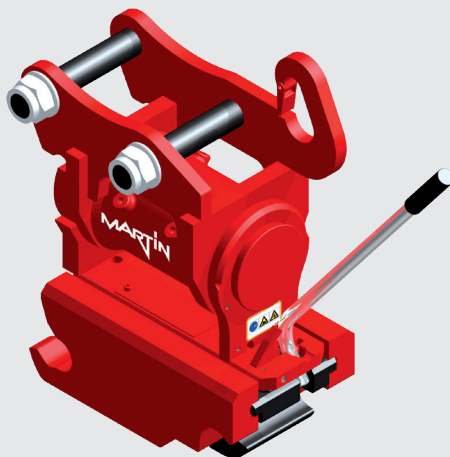
## Types



**MARTIN Semi-automatic**  
MM for excavator classes to 8.0 t



**MARTIN Hydraulic**  
MH for excavator classes from 1.8 t to 26.0 t



**MARTIN Semi-automatic with rotary drive**  
MMPTS from 1.8 t to 3.5 t



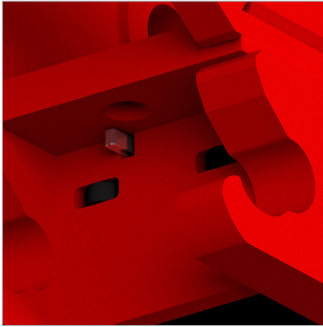
**MARTIN Hydraulic with rotary drive**  
MHPTS from 1.8 t to 26.0 t

## Benefits

With the mechanical version MM, the opening and closing path has been adapted to the hydraulic system. To unlock, the lever is now pressed downwards – a great ergonomic benefit. For consistent force transmission, the lever movement runs over a permanently defined pivot point.

All hydraulic and mechanical Quick Coupling systems have a visual lock control. So the excavator operator can recognise the correct locking position. All Quick Coupling systems are fitted with high-quality load hooks – for a high working load and a long service life.

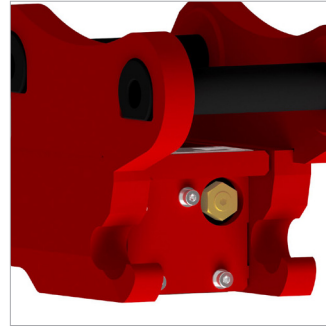
## Features



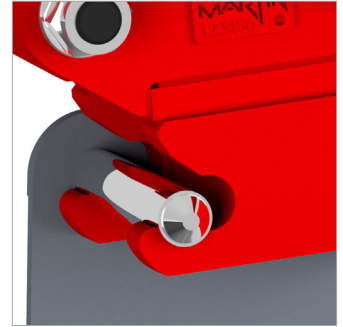
Visual lock control



Safety locking hooks with latch on the mechanical Quick Coupling system







Non-return valve on the hydraulic Quick Coupling system



Forks with catch shoe

## Overview of MARTIN Quick Coupling systems

	Attachment system	M02	M03	M10	M18	M20*	M26
	Changer type	to 1.8 t	1.8 to 3.5 t	3.5 to 10.0 t	10.0 to 16.0 t	to 19.0 t	19.0 to 26.0 t
	MM/MA MARTIN Semi-automatic	MM02	MA03D	MA10 (to 8.0 t only)	-	-	-
	MAPTS MARTIN Semi-automatic with rotary drive	-	MA03D PTS 4.5 (to 1.8t only) or MM03C PTS 06	-	-	-	-
	MH MARTIN Hydraulic	-	MH03D	MH10	MH18	MH20	MH26
	MHPTS MARTIN Hydraulic with rotary drive	-	MH03D PTS 4.5 (to 1.8t only) MH03D PTS 06 PTS050	MH10 PTS 050 (to 3.8t only) MH10 PTS 070 MH10 PTS 100	MH18 PTS 180 MH18 PTS 10	MH20 PTS 180	MH26 PTS 240

\*M20: reinforced version of the M18 mounting, compatible with M18 attachments

## Technical Data

Technical Data for the mechanical Quick Coupling system	Certified to ISO 9001
Forks made of wear-resistant steel	
Safety locking hooks: highly resilient, tempered steel (wear resistant and corrosion protected)	
Permanent contact force due to spring compressor	
Low height	
High-quality, integrated load hooks	
Load hooks – maximum permissible working load	
» MM02: to 1.8 t excavator weight 1,000 kg/2,200 lbs	
» MA03D: to 3.5 t excavator weight 2,000 kg/4,400 lbs	
» MA10: to 10.0 t excavator weight 5,000 kg/11,600 lbs	

Technical Data for the hydraulic Quick Coupling system	Certified to ISO 9001
Forks made from of wear-resistant steel	
Hydraulic two-way system	
Closing pressure 35-50 bar (MH03D, MH10, MH18, MH20)	
» Opening pressure min. 35 bar/short-term max. 240 bar (MH03D, MH10, MH18, MH20)	
» Closing pressure 150-180 bar (MH26)	
» Opening pressure min. 150 bar/short-term max. 250 bar (MH26)	
Permanent contact force	
Low height	
High-quality, integrated load hooks	
Load hooks – maximum permissible working load	
» MH03D: to 3.5 t excavator weight 2,000 kg/4,400 lbs	
» MH10: to 10.0 t excavator weight 5,000 kg/11,600 lbs	
» MH18: to 16.0 t excavator weight 8,000 kg/17,600 lbs	
» MH20: to 19.0 t excavator weight 8,000 kg/17,600 lbs	
» MH26: to 26.0 t excavator weight 10,000 kg/57,600 lbs	



MARTIN excavator buckets and Quick Coupling systems – a perfect team

## MARTIN Dedicated System

MARTIN excavator buckets together with the MARTIN quick couplers offer an optimally-matched system – the MARTIN DEDICATED SYSTEM.

High-quality materials, innovative design and meticulous production guarantee the highest MARTIN quality. Buckets with longer service life for the toughest use and conditions.