



SIMEX
HEAVY MADE EASY

RANGE
WG

WALL GRINDERS

WG 40

WG 50

WG 60

- Quiet operation
- No vibrations
- Ideal for removing shotcrete bumps
- Excellent surface finishing

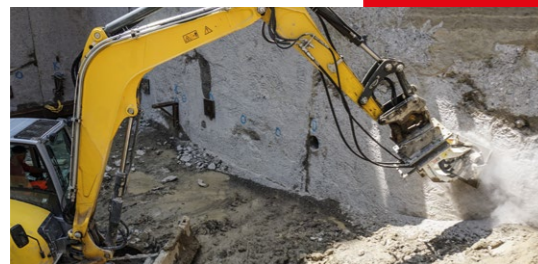
WG 40
WG 50
WG 60



Designed for excavator mounting, Simex WG wall grinders are ideal for smoothing uneven surfaces and removing shotcrete bumps.

Quiet operation and no vibrations. Optimal for working in sensitive areas (city centers, hospitals, schools, tunnels, etc.).

Excellent degree of surface finishing.



ADVANTAGES

- Quiet operation
- No vibrations
- Ideal for removing shotcrete bumps
- Excellent surface finishing



TECHNICAL DATA		WG 40	WG 50	WG 60
Recommended excavator weight (1)	ton lbs	3,5 - 7 7700 - 15000	6 - 12 13000 - 26000	12 - 20 24000 - 40000
Disk diameter	mm inch	400 16	500 20	600 24
Max. power	kN (hp)	22 (30)	34 (46)	50 (67)
Lateral tilt to right and left	-	55°	55°	55°
Rotation speed	rpm	130 - 160	130 - 160	100 - 130
Operating weight (2)	kg lbs	175 385	290 640	550 1210
Required oil flow	l/min gpm	45 - 70 12 - 18	60 - 110 16 - 29	100 - 180 27 - 47
Max. required oil pressure	BAR psi	300 4350	300 4350	300 4350

(1) User is responsible for ensuring that the equipment meets the excavator's specifications and weight requirements.

(2) Without mounting bracket attaching to prime mover.

Simex does not accept responsibility or liability for the information provided. Technical modifications may vary without prior notice.

- Utilities
- Quarries and mines
- Demolition
- Port and underwater works
- Construction and building
- Infrastructure
- Tunneling
- Agriculture and forestry
- Recycling
- Roadworks
- Trenching
- Mini-excavator
- Excavator
- Skid steer loader
- Front loader
- Backhoe