

POWERTILT[®]

Position your Bucket
not your machine.

Tilt any bucket
or attachment
up to 180°

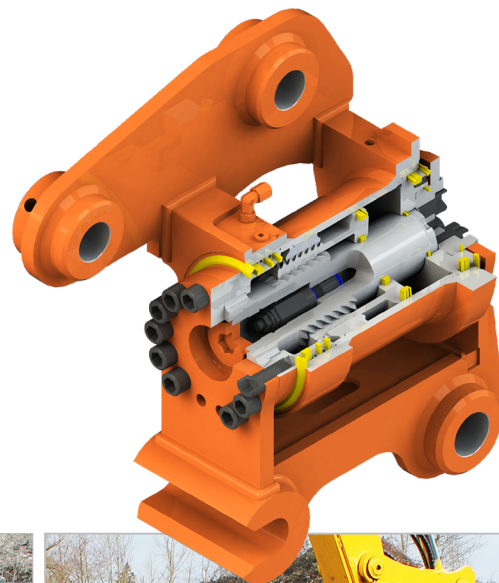


ENGINEERING YOUR SUCCESS.

POWERTILT®

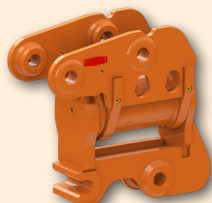
Perform Work Faster, Safer and Easier with PowerTilt®

Tilt any bucket or attachment up to 180° with our exclusive sliding spline technology. Increase productivity by 50% by simply tilting your attachment instead of moving the entire machine.

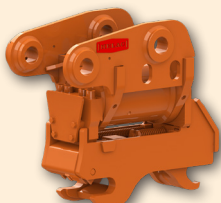


Coupler Options

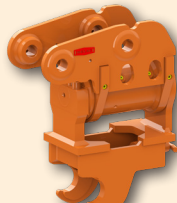
All PowerTilt models come with a standard half-hitch coupler. Coupler options vary by model.



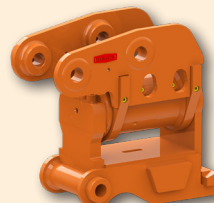
Standard pin-on



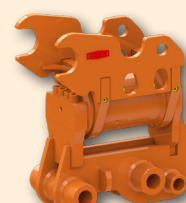
Hydraulic Pin Grab



Universal



Brand specific



Custom

Reference Guide	PT-030	PT-050	PT-070	PT-100	PT-180	PT-240	PT-300	PT-465
Maximum Machine Weight (lb)	6,600	11,000	15,500	22,000	40,000	53,000	70,000	110,000
Approx. PowerTilt Weight (lb)	84	123	211	302	557	785	990	1,260
Total Tilt	180°	180°	180°	180°	120°	120°	120°	120°
Required Oil Flow (gpm)	1.7-5	2.5-7.5	3.3-10	5-15	7-21	9-28	13-38	16-48

Note: A two-way auxiliary hydraulic circuit is required for operation.



Parker Hannifin Corporation Helac/Cylinder Division 225 Battersby Avenue Enumclaw, WA 98022 USA
U.S. and Canada 800.PWR.TILT **Worldwide** 360.825.1601 **Email** attachments@helac.com **Web** www.helac.com

© 2020 Parker Hannifin Corporation U.S. Patent #4906161; Europe #356738; Japan #2614922

01/20 / HY34-1050