



SIMEX
HEAVY MADE EASY

RANGE
T/TA

**WHEEL
SAWS**
FOR SET-SECTION TRENCHES

T 200

T 300

TA 300

T 450

T 600

T 800

- Clean trench
- Max. safety
- High performance
- High cutting force

WHEEL SAWS

FOR SET-SECTION TRENCHES

T 200
T 300
TA 300
T 450
T 600
T 800

Utilities

Quarries and mines

Demolition

Port and
underwater works

Construction
and building

Infrastructure

Tunneling

Agriculture
and forestry

Recycling

Roadworks

Trenching

Mini-excavator

Excavator

Skid steer loader

Front loader

Backhoe



Intended for skid steer mounting, Simex wheel saws offer different solutions for working on hard or compact surfaces, including asphalt, concrete and rock: cuts and small trenches, set-section trenches, mini- and micro-trenches for fiber optic cable installation.

Full wheel protection at any working depth ensures maximum safety of persons and properties.

SIMEX **PERFORMER**
• patent •



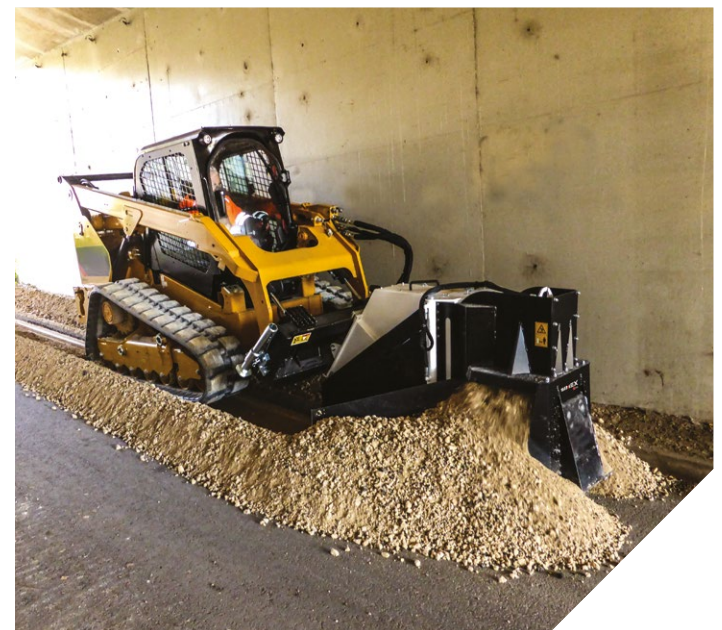
ADVANTAGES

- Clean trench
- Max. safety
- High performance
- High cutting force

| TECHNICAL DATA | | T 200 | T 300 | TA 300 |
|---|--------------|-------------------------------|---------------------------------|---------------------------------|
| Trench width | mm inch | 30 - 40 - 50 1,2 - 1,6 - 2 | 30 - 50 - 80 1,2 - 1,6 - 3,2 | 30 - 50 - 80 1,2 - 1,6 - 3,2 |
| Trench depth | mm inch | 200 8 | 300 12 | 300 12 |
| Depth adjustments | | - | - | - |
| Side shift | | Mechanical | Hydraulic | Hydraulic |
| Trench clearing device | | - | ☐ | ☐ |
| Conveyor belt | | - | - | ☐ |
| Lateral tilt | | - | - | ● |
| Segmented wheel | | - | - | - |
| Vacuum device | | - | ☐ | ☐ |
| Operating weight with standard wheel ⁽¹⁾ | kg lbs | 270 600 | 665 1460 | 845 1860 |
| Required oil flow | l/min gpm | 35 - 75 9 - 20 | 60 - 115 16 - 30 | 60 - 115 16 - 30 |
| Max. oil pressure | BAR psi | 250 3625 | 300 4350 | 300 4350 |

● Standard ☐ On request

1) User is responsible for ensuring that the characteristics of the prime mover suit the weight and specifications of the attachment. Simex does not accept responsibility or liability for the information provided. Technical modifications may vary without prior notice.



| DATI TECNICI | | T 450 | T 600 | T 800 |
|---|--------------|--|---|----------------------|
| Trench width | mm inch | 50 - 80 - 100 - 130 - 160 - 200 1,6 - 3,2 - 4 - 5 - 6,3 - 8 | 80 - 100 - 130 - 160 - 200 3,2 - 4 - 5 - 6,3 - 8 | 250 10 |
| Trench depth | mm inch | 150 - 450 6 - 17 | 200 - 600 8 - 24 | 450 - 800 17 - 31 |
| Depth adjustments | | Hydraulic | Hydraulic | Hydraulic |
| Side shift | | Hydraulic | Hydraulic | Hydraulic |
| Trench clearing device | | ☐ | ☐ | - |
| Conveyor belt | | ☐ | - | - |
| TILT - Lateral tilt | | - | - | - |
| Segmented wheel | | ☐ (T 450S) | ☐ (T 600S) | - |
| Vacuum device | | ☐ | ☐ | - |
| Operating weight with standard wheel ⁽¹⁾ | kg lbs | 1115 2450 | 1340 2950 | 1430 3150 |
| Required oil flow | l/min gpm | 100 - 160 27 - 42 | 110 - 170 29 - 45 | 110 - 170 29 - 50 |
| Max. oil pressure | BAR psi | 300 4350 | 300 4350 | 300 4350 |

● Standard ☐ On request

1) User is responsible for ensuring that the equipment meets the excavator's specifications and weight requirements.

Simex does not accept responsibility or liability for the information provided. Technical modifications may vary without prior notice.

CONVEYOR BELT



• CONVEYOR BELT

Conveys the excavated material to a height that allows it to be loaded into the bucket of a second machine.
(Optional on TA 300 and T 450)

ASPIRATION

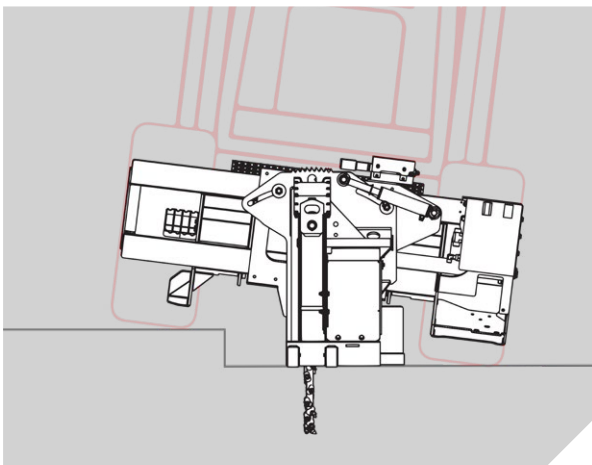


• ASPIRATION

By replacing the front section and closing the outlets, the excavated material can be aspirated with the aid of a vacuum truck.
(Optional)

TA 300

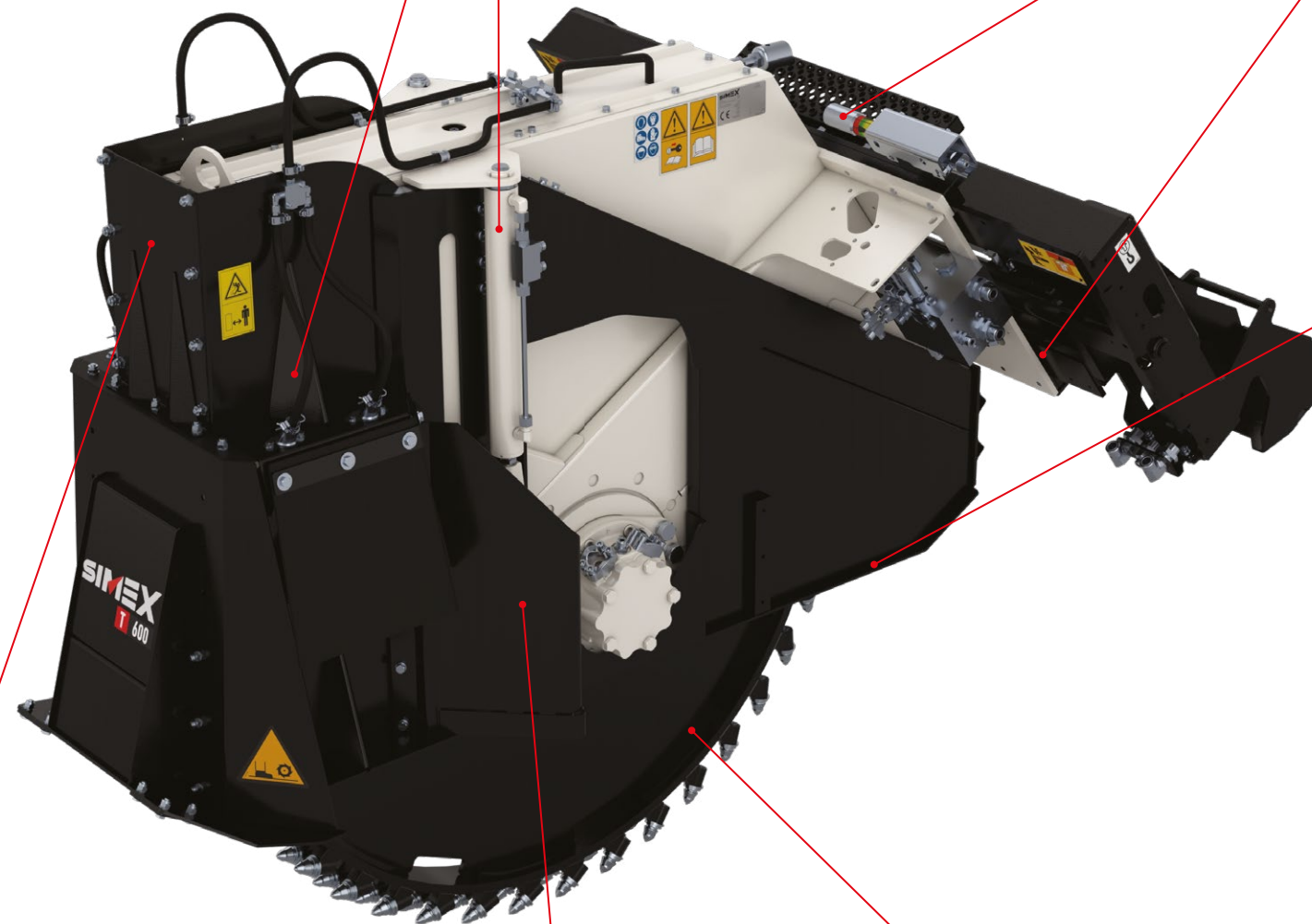
Hydraulic lateral tilt: maintains the wheel saw vertical in any condition, even when the prime mover is not parallel to the road surface.



HYDRAULIC DEPTH ADJUSTMENT

WATER SPRAY

for dust control. (Optional)



SIDE DISCHARGE OF MATERIAL

Special design of outlets allows trench to be cleared efficiently at the depth programmed. Material is discharged to right or left, or totally to the LH side by closing the RH outlet (useful for roadside trenching). (except T800)

PERFORMER : THE PERFORMANCE OPTIMIZER

Informs the operator how to work with Simex attachments to maximize power and performance
(Optional)

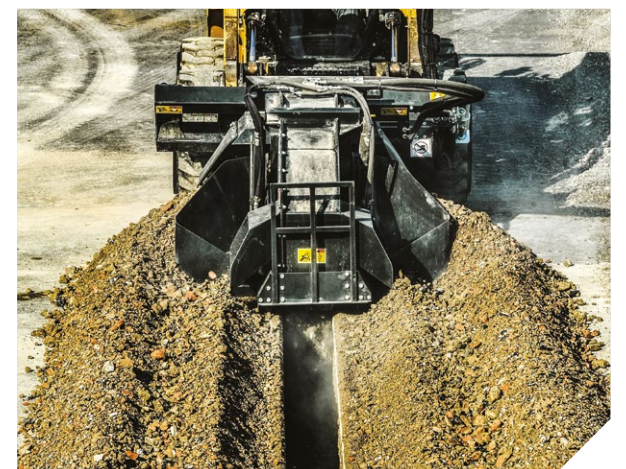
HYDRAULIC SIDE SHIFT

SCRAPERS: TRENCH CLEARING DEVICE

The trench clearing device is a blade that is hydraulically activated to enter the trench during work. Improves emptying and guarantees a clean trench (not for T 800). (Optional)

T 800

Compared to the other models of the T range, the T 800 is fitted with an integrated motor in the wheel that enters the trench and goes down to a depth of 800mm without excessively increasing the wheel diameter. The T 800 is also the only one that works reverse.



SEGMENTED WHEEL

Disk with removable, interchangeable segments allows quick variation of the trench width while maintaining the same base wheel.
(not for T 800)



Utilities



Quarries and mines



Demolition



Port and underwater works



Construction and building



Infrastructure



Tunneling



Agriculture and forestry



Recycling



Roadworks



Trenching



Mini-excavator



Excavator



Skid steer loader



Front loader



Backhoe